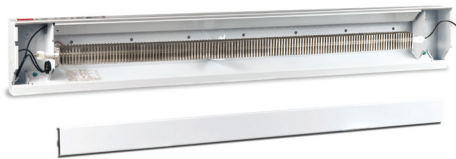


ELECTRIC BASEBOARD

Sensible, quiet heat starts here



- Practical design is ideal for new construction and built to last
- Easy installation with pre-punched knockouts at 1-inch intervals
- Universal wiring available at either end
- Proven construction helps maximize surface area and funnel heated air
- Place under a window for best results
- Includes high-temperature safety shutoff feature
- Powder coated for a smooth, durable finish
- Lifetime warranty

Take the chill out of any room with our most popular baseboard heater. Enjoy the simple warmth of reliable, quiet convection heat. All our Cadet baseboards are designed for easy installation and will keep you warm for years to come.

ARCHITECTURAL - ENGINEERING INFORMATION

Electric baseboard heaters are UL listed, factory rated at 120V, 208V, and dual rated from 208V to 240V. Element is steel sheathed calrod element with channel shaped aluminum fins. A full length capillary sensor tube is an integral part of each unit. Case, cover, and deflector are made of 24 gauge steel with 20 gauge junction boxes containing a grounding screw. All metal pieces are finished with a powder coat paint system.

TECHNICAL INFORMATION

Baseboard heaters work best when placed under a window and at least 12 inches away from furniture or other objects. Keep at least 12 inches minimum from objects hanging above (i.e., drapes). Do not install below electrical outlets. The electric baseboard heater may be placed directly on the floor and mounted to the wall. An optional Cadet MTX mounting tool is helpful for installing the heater. Originally designed for mounting baseboard heaters, its applications are unlimited.

All models require hard-wire installation (no cord or plug).

CADET 
INVITING WARMTH

cadetheat.com
855.CADET.US
Vancouver, Washington



ELECTRIC BASEBOARD

Dimensions: 6-3/4" H x 2-1/2" D x Various lengths
All models require a thermostat. Accessories below.

WHITE PART	ALMOND PART	MODEL*	DESCRIPTION	WATTS	VOLTS	AMPS	BTUS	WT/LBS
05530	05520	2F500-1	30" baseboard	500	120	4.2	1710	6
05532	05522	3F750-1	36" baseboard	750	120	6.3	2560	7
05534	05524	4F1000-1	48" baseboard	1000	120	8.3	3415	9
05536	05526	6F1500-1	72" baseboard	1500	120	12.5	5120	12
11924	11918	2F500-8	30" baseboard	500	208	2.4	1710	6
11934	11938	3F750-8	36" baseboard	750	208	3.6	2560	7
11944	11948	4F1000-8	48" baseboard	1000	208	4.8	3415	9
11954	11958	5F1250-8	60" baseboard	1250	208	6.0	4265	10
11964	11968	6F1500-8	72" baseboard	1500	208	7.2	5120	12
11984	11988	8F2000-8	96" baseboard	2000	208	9.6	6825	16
10924	11990	8F2500-8	96" baseboard	2500	208	12.0	8530	18
09949	06501	2F350	24" baseboard	350/262	240/208	1.5/1.3	1195/895	5
09950	06502	2F500	30" baseboard	500/375	240/208	2.1/1.8	1710/1280	6
09952	06508	3F750	36" baseboard	750/563	240/208	3.1/2.7	2560/1925	7
09954	06509	4F1000	48" baseboard	1000/750	240/208	4.2/3.6	3415/2560	9
09955	06510	5F1250	60" baseboard	1250/937	240/208	5.2/4.5	4265/3200	10
09956	06511	6F1500	72" baseboard	1500/1125	240/208	6.3/5.4	5120/3840	12
09958	06513	8F2000	96" baseboard	2000/1500	240/208	8.3/7.2	6825/5120	16
09960	06515	8F2025	96" baseboard	2500/2000 1875/1500	240 208	10.4/8.3 9.0/7.2	8530/6825 6400/5120	18
03360	03358	8F2500	96" baseboard	2500/1875	240/208	10.4/9.0	8530/6400	18

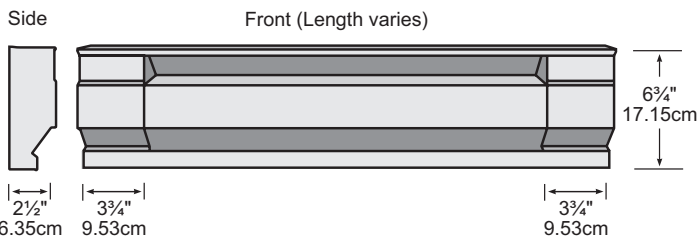
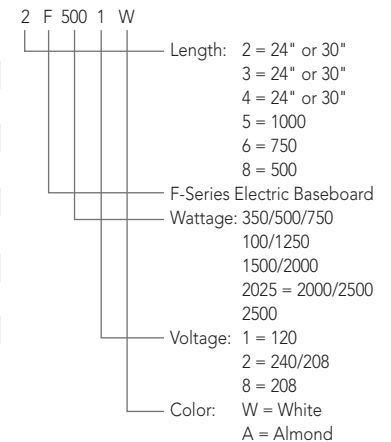
*Add suffix W or A to model to designate color

BASEBOARD ACCESSORIES

WHITE PART	ALMOND PART	MODEL*	DESCRIPTION	VOLTS	AMPS
03400	n/a	SBFT2	Smartbase built-in thermostat kit, electronic programmable, double pole, 40°F to 85°F, retail pack	240/208	12.6
08734	03365	BTF2	Built-in thermostat kit, double pole, retail pack, 40°F to 85°F	240/208/120	25
14925	14920	BTF2	Built-in thermostat kit, double pole, 40°F to 85°F	240/208/120	25
08732	03366	BTF1	Built-in thermostat kit, single pole, retail pack, 40°F to 85°F	240/208/120	25
14915	14910	BTF1	Built-in thermostat kit, single pole, 40°F to 85°F	240/208/120	25
14963	14960	LTF240	Built-in load transfer switch kit	240	
14902	14900	BRF12	Built-in receptacle plate, requires separate supply wire	120	
14932	14930	BTF1TP	Built-in thermostat kit single pole tamper proof, 40°F to 85°F	240/208/120	25
14942	14940	BTF2TP	Built-in thermostat kit double pole tamper proof, 40°F to 85°F	240/208/120	25
14971	14970	BLF1	Corner Connector, inside or outside 90°		
11030	MTX		Mounting tool for baseboard installation		

*Add suffix W or A to model to designate color

Model No. Code



SBFT2W



BTF2W



LTF240A



BRF12W



BLF



MTX